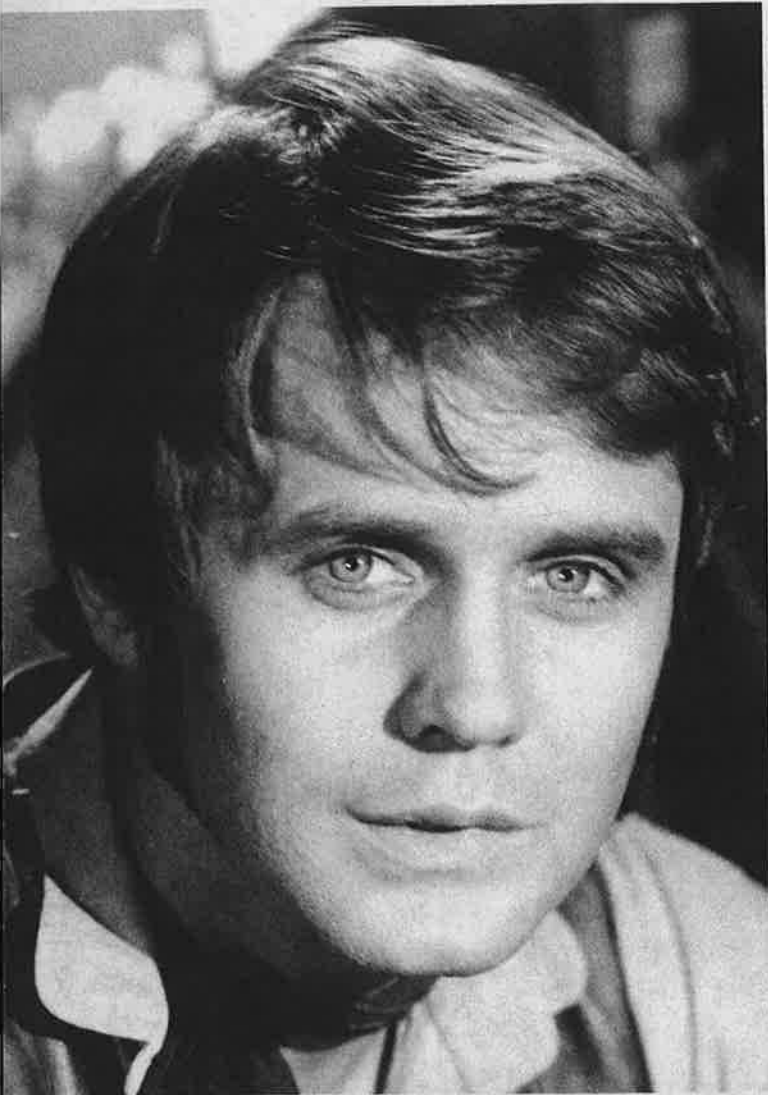
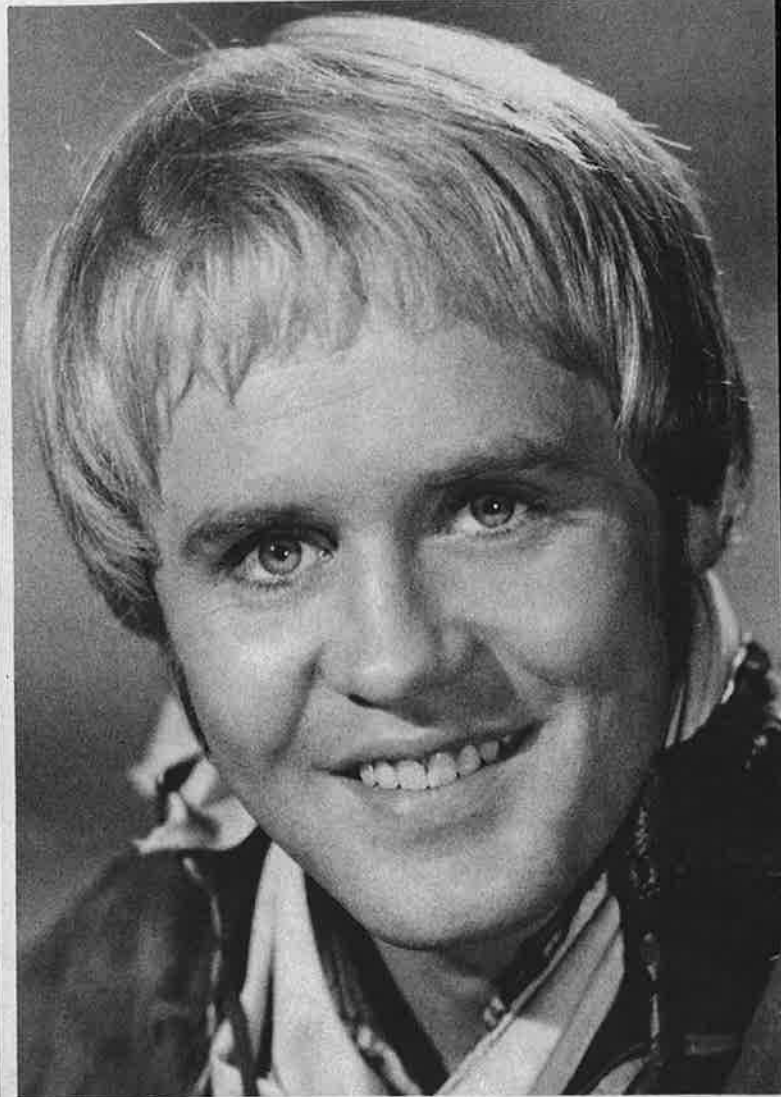


Mark Slade invites you to — MEET THE NEW “BLUE”!



New “Blue” —



and Old “Blue”

THE CHARACTER I play on NBC-TV's *High Chaparral* series, “Billy Blue Cannon,” has been going through some “growing pains” and changes this season. I'd like to tell you a little bit about them — and about the new “Blue” you'll be seeing this year!

“Billy Blue” has grown about five years from the way you remember him. He's more mature now and he's learned to face life squarely. He handles whatever problems come his way on a man-to-man basis, without running to anyone else for help and advice. Billy is his own man now. He has learned to work things out by himself, instead of turning to “Big John” the way he used to.

As a result of his new maturity, Billy's relationships with other members of the cast are more true-to-life. For instance, in a recent episode he said to Victoria (she's his

stepmother on the series), “Don't lecture me!” Before Billy “grew up,” he would always listen to advice from his elders.

Billy's changes have even extended to how he looks. He no longer has blond hair (it's been darkened) and it's longer and groovier-looking now. He is wearing a new outfit too — that I designed just for the new TV “me.” All in all, I think the changes make “Billy Blue” more exciting than ever — don't you?

FLASH NEWS ON MARK SLADE: Mark is currently completing his second Tetragrammaton LP and it's sure to be a smash! And — listen to this inside tidbit on Mark! — he was recently made Grand Marshall of the Soapbox Derby in Akron, Ohio! Mark once entered the Derby himself as a young boy — guess the racing fever's still in him!!